



## Flooding in Thailand

Three months of heavy monsoon rain have flooded a third of the Thailand since late July, most severely in the Chao Phraya but also in the Mekong River basin. Northern and central areas were worst hit initially but now the run-off is draining south, threatening the capital city Bangkok as it combines with a seasonal high tide.

Thailand's Meteorological Department <http://www.tmd.go.th/en/> has been issuing detailed and regularly updated forecasts. According to the most recent one, during 28-30 Oct, the moderate high pressure area from China extends to cover the Northeast of Thailand and the South China Sea. The westerly trough will move across the upper North of Thailand. During 31 Oct – 3 Nov, another high pressure area from China will extend to cover upper Thailand causing cool weather.

The moderate northeast monsoon prevails over southern Thailand and the Gulf of Thailand. Abundant rainfall is likely over the southern Thailand east coast. Especially in 28-30 October, isolated heavy to very heavy rain is expected in Chumphon southward. Wind-wave in the Gulf of Thailand is about 2 meters high during the period. During 28-30 October, people in the southern Thailand east coast area from Chumphon southward should beware of heavy rain and flooding condition and all ship in the gulf of Thailand should proceed with caution.

In its three monthly-forecast for October to December, Thailand's Meteorological Department accurately predicted many parts of Thailand would receive above average rainfall. Details of the three month forecast at [http://www.tmd.go.th/programs/uploads/forecast/2011-10-12\\_3months\\_EN\\_141045.pdf](http://www.tmd.go.th/programs/uploads/forecast/2011-10-12_3months_EN_141045.pdf)

- In October and November, there is high probability that the tropical cyclones in the Western North Pacific Ocean or the South China Sea move through eastern and southern parts of Thailand. Therefore, people should beware of natural disaster and follow the weather news.

- In December, Westerly trough may move from Myanmar through upper Thailand, causing thundershowers and gust in some areas. The active low pressure cell in the lower Gulf of Thailand or the lower South China Sea may be active to the tropical cyclones and move through southern Thailand, causing abundant rainfall in those areas with storm surge over the coastal areas of southern Thailand, people and navigators should follow the weather forecast for further information.

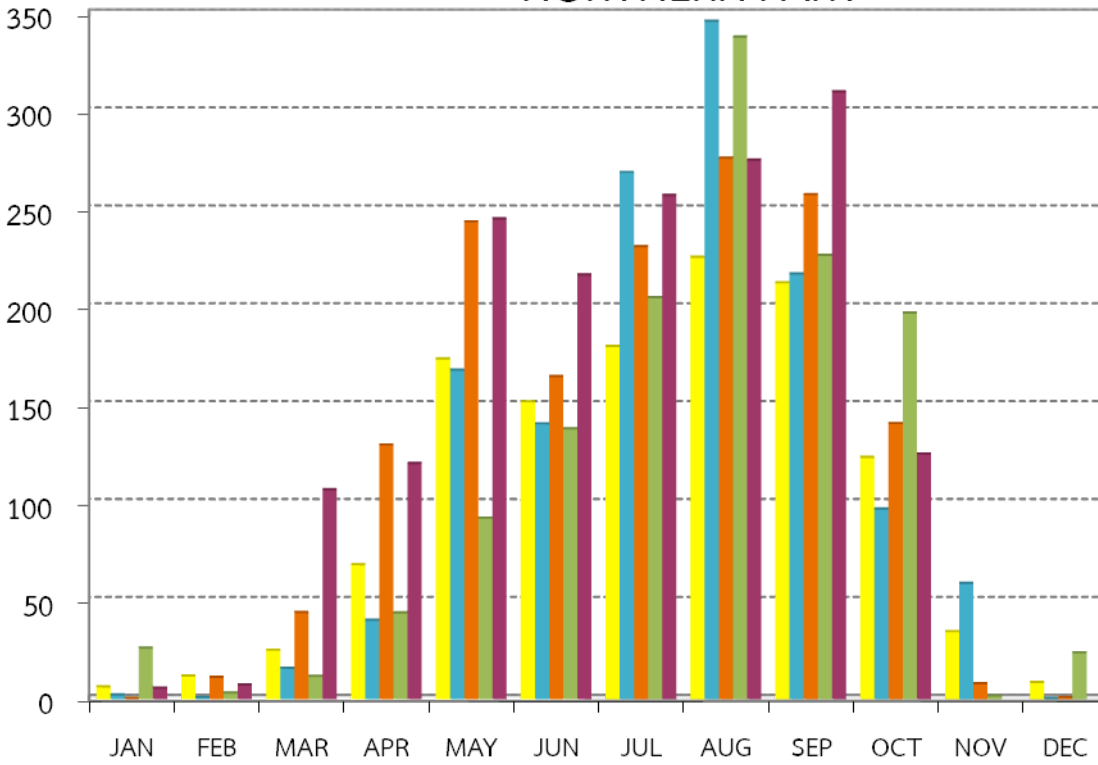
Additional details of the winter forecast at

[http://www.tmd.go.th/programs%5Cuploads%5Cforecast%5C2011-09-22\\_Seasonal\\_EN\\_111502.pdf](http://www.tmd.go.th/programs%5Cuploads%5Cforecast%5C2011-09-22_Seasonal_EN_111502.pdf)

## MEAN MONTHLY RAINFALL

### NORTHERN PART

Millimeter



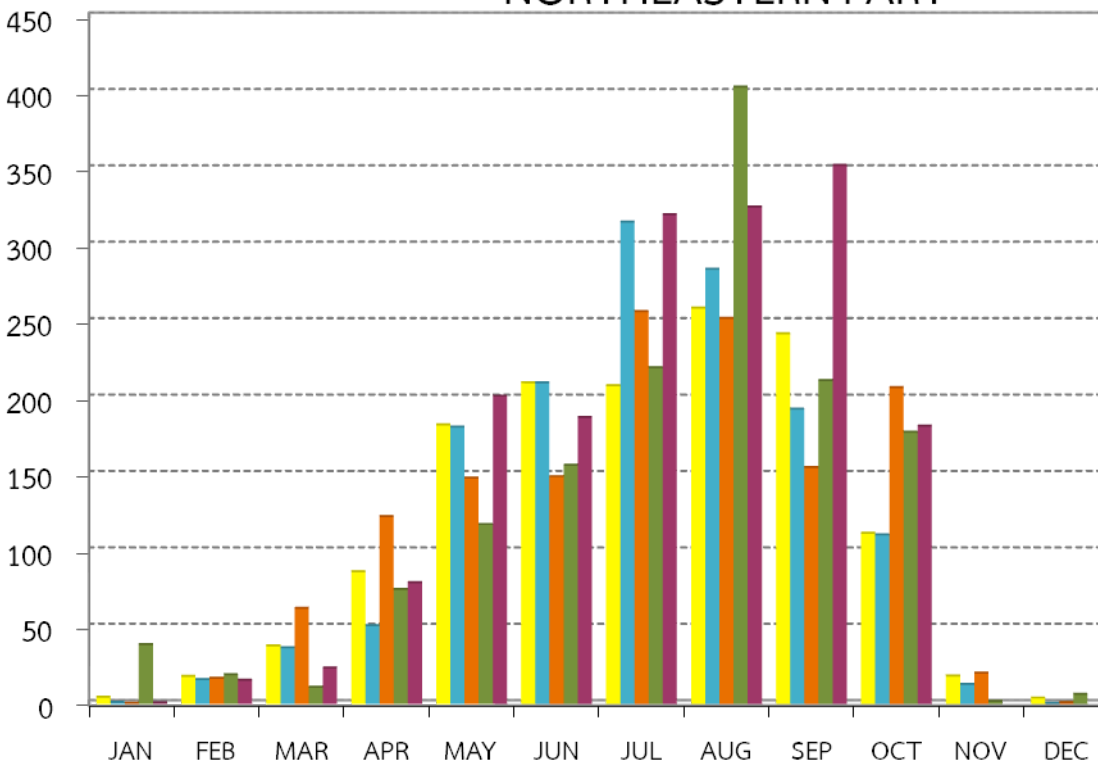
Remark : data 2011 updated

■ Normal 
 ■ 1995 
 ■ 2006 
 ■ 2010 
 ■ 2011

## MEAN MONTHLY RAINFALL

### NORTHEASTERN PART

Millimeter

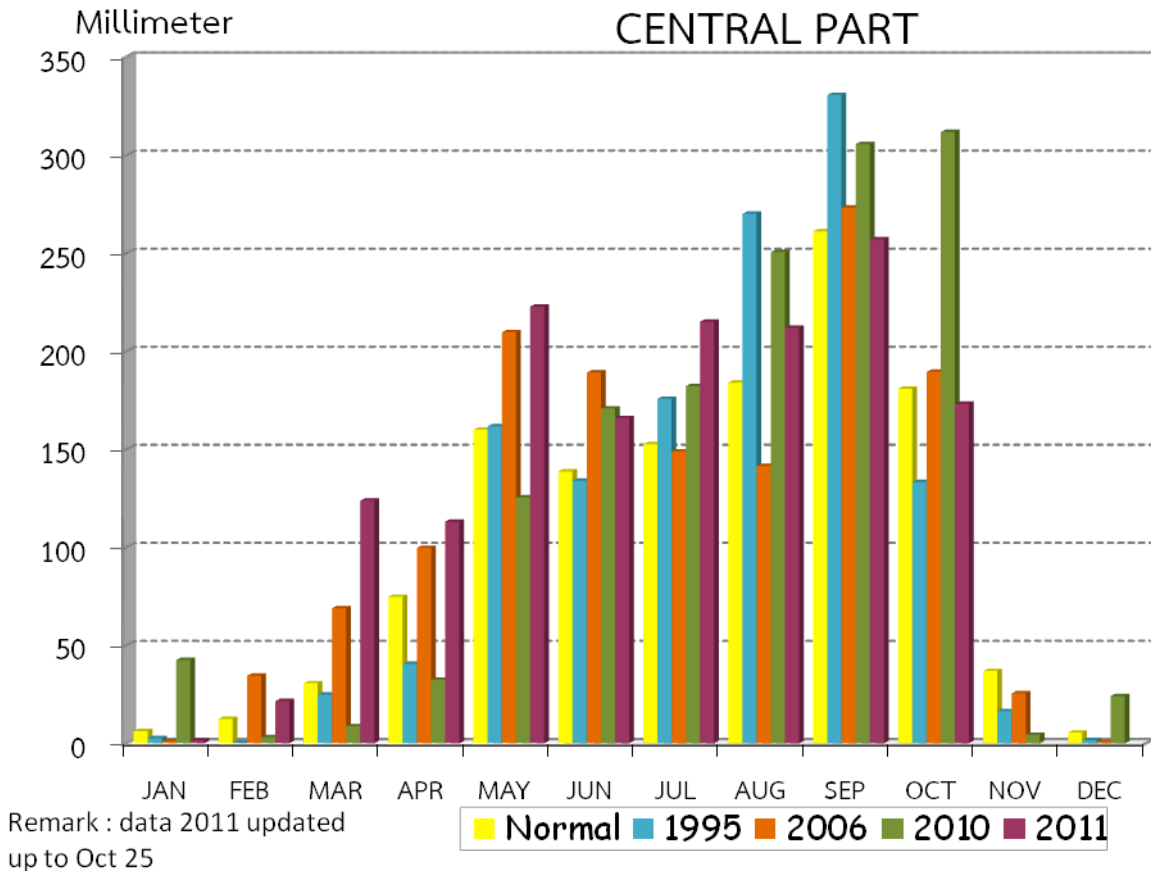


Remark : data 2011 updated  
up to Oct 25

■ Normal 
 ■ 1995 
 ■ 2006 
 ■ 2010 
 ■ 2011

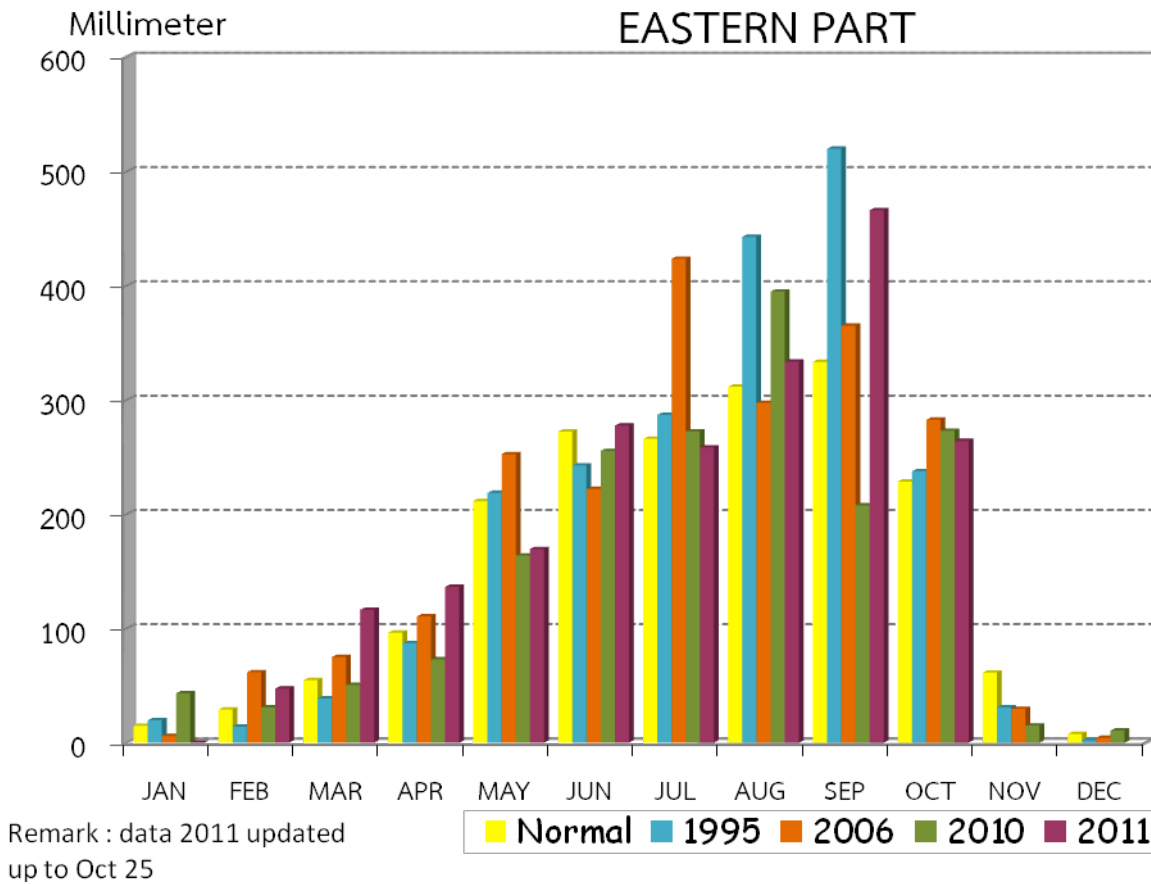
## MEAN MONTHLY RAINFALL

### CENTRAL PART

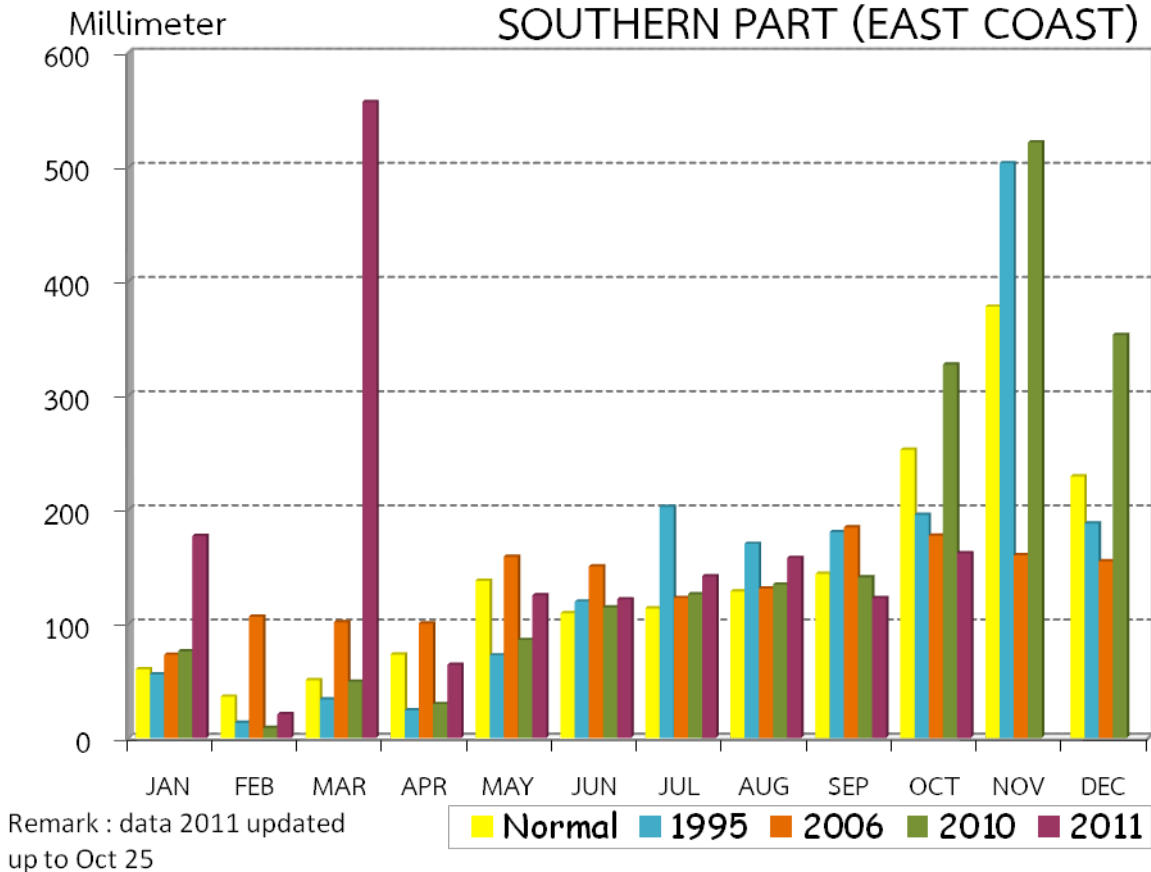


## MEAN MONTHLY RAINFALL

### EASTERN PART



## MEAN MONTHLY RAINFALL SOUTHERN PART (EAST COAST)



## MEAN MONTHLY RAINFALL SOUTHERN PART (WEST COAST)

