

THORPEX MANAGEMENT STRUCTURE
(As agreed at the seventh session of the THORPEX ICSC
Implementing decisions ICSC7/7 and ICSC7/39))
UPDATED 1 FEBRUARY 2010

1. THORPEX International Core Steering Committee

- i. **Representatives of Nations** (Canada, France, Korea, Russia, South Africa, Morocco, Japan, Australia, UK, USA, Germany, India, Norway, China) who have voting rights.
- ii. **Representatives of International Organisations and Committees** who have observer status - currently:
- iii.

President of CAS	Dr Michel Beland
EUMETSAT	Dr Lars Prahm
EUMETNET	Dr Jochen Dibbern
ECMWF	Dr Philippe Bougeault
Chair of the WWRP/JSC	Dr Gilbert Brunet
Chair of the WWRP/SERA WG	Dr Brian Mills
CO-Chair of the WGNE	Dr Martin Miller
CGMS	Dr Jim Purdom
CBS	Dr Fred Branski
WCRP/JSC	Professor Anthony Busalacci
- iv. **One representative from each THORPEX Working Group and Regional Committee** who have observer status
- v. **Members of the ICSC Executive Committee** who have voting rights if they are members of category i (representatives of nations).
- vi. **Secretariat** including D/AREP, D/IPO(C/WWRP) and the Manager/IPO

2. ICSC Executive Committee membership

The THORPEX Executive Committee (EC) comprises the following drawn from the ICSC membership.

	Currently
Chair – the ICSC Chair	Alan Dickinson
A Trust Fund representative	Vacant
Representative of the Co-Chairs	Zoltan Toth
A representative from the WWRP/JSC	Huw Davies
A representative from the CAS Management Board	Vacant
A representative of CBS	Walter Zwiefelhofer
A secretariat	THORPEX/IPO

3. Working Groups

Three working groups, reporting to the ICSC and the EC as required, are charged with developing and coordinating the THORPEX programmes.

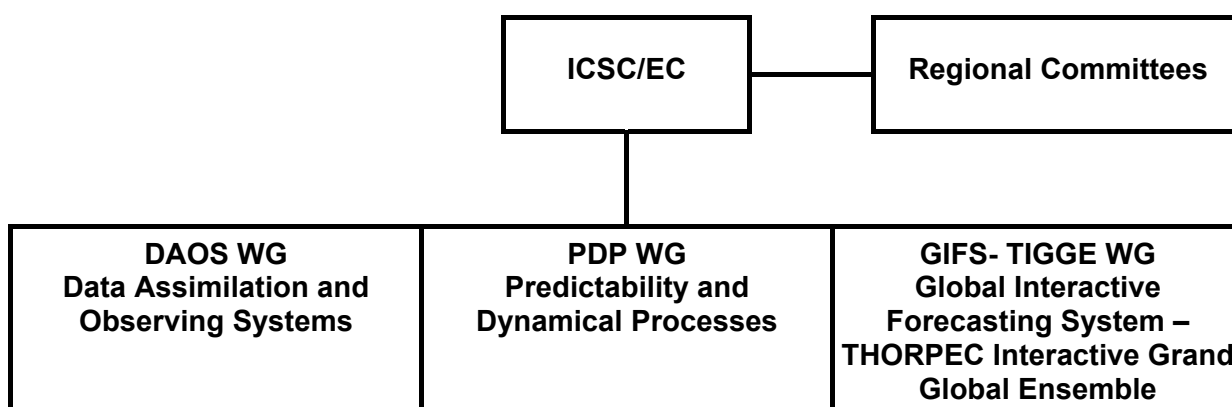
- Predictability and Dynamical Processes Working Group (PDP WG)
- Data Assimilation and Observing Systems Working Group (DAOS WG)
- Global Interactive Forecasting System (GIFS) – THORPEX Interactive Grand Global Ensemble Working Group (GIFS-TIGGE WG).

4. Regional Committees

Nations and consortia of nations have established THORPEX Regional Committees (RCs) that define regional priorities for participation in THORPEX within the framework of the THORPEX International Science and Implementation Plans. These THORPEX Regional Committees develop regional activities within the framework of the international plans and their plans are discussed by the EC and reviewed and approved by ICSC. To date Regional Committees have been established for Asia (ARC), Africa (AfRC), Europe (ERC), North America (NARC) and the Southern Hemisphere (SHRC).

5. Organigramme

The organigramme for the agreed Management Structure is:



6. Working Group Membership (as of 1 February 2010)

Data Assimilation & Observing Systems Working Group (DAOS WG)

Members	Affiliation
Pierre Gauthier (Co-chair)	CMC
Roger Saunders (Co-chair)	UKMO
Florence Rabier	Météo France
Bertrand Calpini	MeteoSwiss
Carla Cardinale	ECMWF
Ron Gelaro	NASA
Tom Hamill	CDC
Tom Keenan	BoM
Ko Koizumi	JMA
Rolf Langland	NRL
Andrew Lorenc	UKMO
Tetsuo Nakazawa	JMA
Peter Steinle	BoM

Michael Tsyroulnikov	Russia
Christopher Velden	USA
Jochen Dibbern	EUMETNET/DWD
Representative from the OPAG IOS	TBD

Predictability and Dynamical Processes Working Group (PDP WG)

Members	Affiliation
Heini Wernli (Co-chair)	University of Mainz
Istvan Szunyogh (Co-chair)	Texas A&M University
Sarah Jones	University of Karlsruhe
Craig Bishop	NRL
Thomas Jung	ECMWF
Shuhuei Maeda	JMA
Olivier Talagrand	LMD
Pat Harr	NPS

Global Interactive Forecasting System (GIFS) – THORPEX Interactive Grand Global Ensemble Working Group (GIFS-TIGGE WG)

Members	Affiliation
Zoltan Toth (Co-chair)	NCEP USA
Richard Swinbank	UKMO UK
David Richardson	ECMWF
Jing Chen	CMA China
Beth Ebert	BOM Australia
Young-Youn Park	KMA Korea
Pedro Silva Dias	CPTEC USA
Laurie Wilson	Laurie Wilson
Kiyo Sato	JMA Japan
Steve Worley	NCAR
Laurent Descamp	Météo France

Observers

Verification Working Group (Barbara Brown)
 Representatives from WWRP/SERA, PDP, DAOS WGs