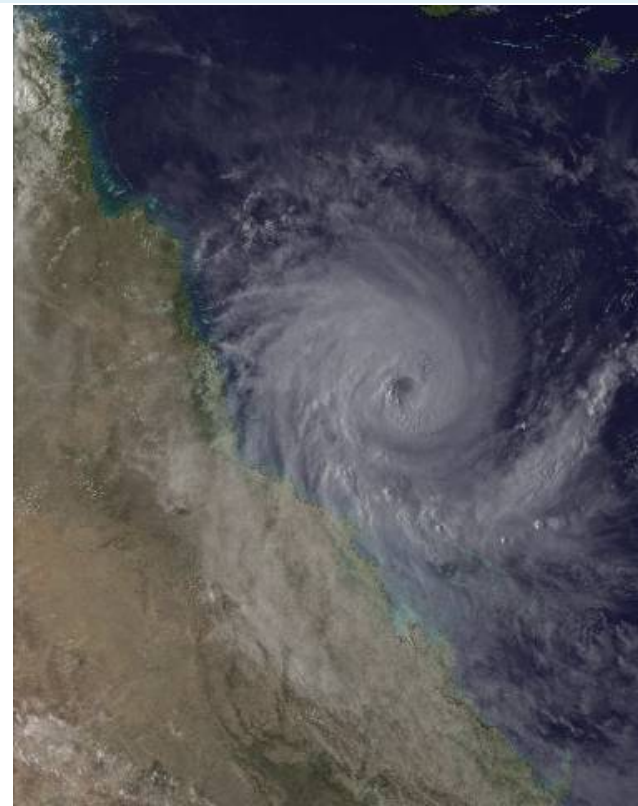
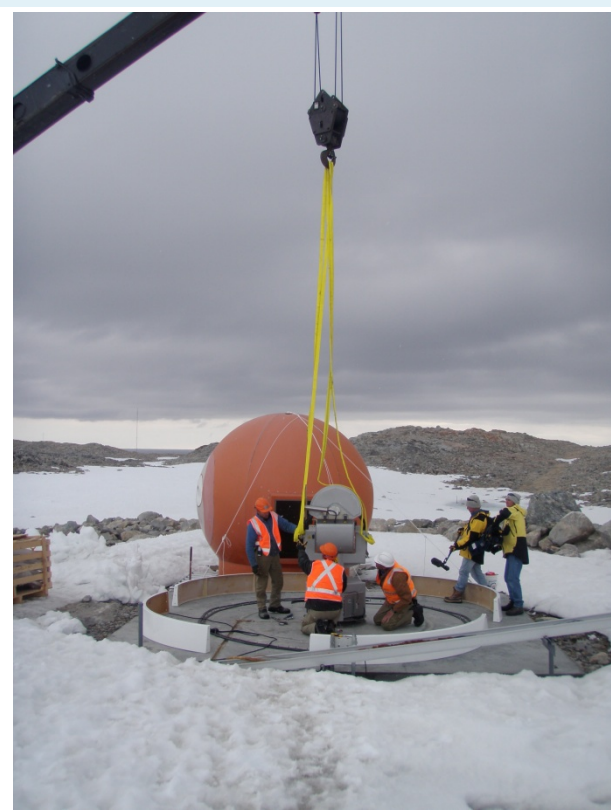




Australian Government
Bureau of Meteorology

Bureau of Meteorology Context



Use of Satellite Data in the Bureau



Most of the applications in the Bureau focus on the atmosphere

Weather and Warnings

- Timeliness = key factor
- **Forecasters** mainly use VIS, IR, WV products for nowcasting
 - e.g. cloud images, volcanic ash products, fog detection

Numerical Prediction Models:

- **Temperature and humidity soundings**
 - key sources - microwave and IR polar orbiting satellite data
 - GPS is an emerging data source (Radio Occultation and ground-based water vapour)
- **Wind**
 - scatterometers
 - satellite derived Atmospheric Motion Vectors

Earth-related applications:

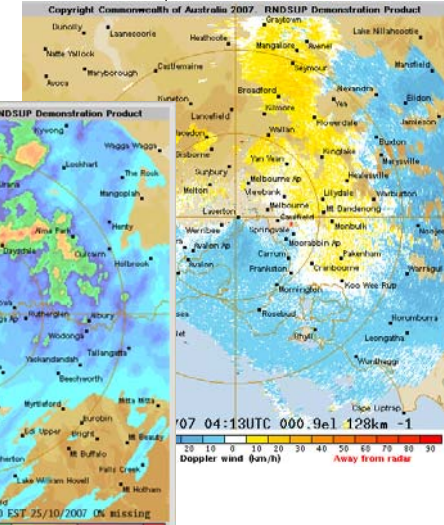
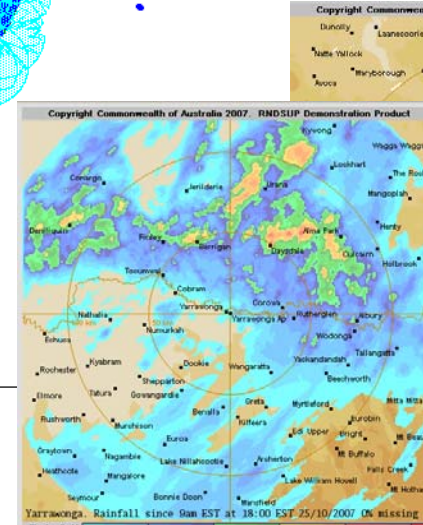
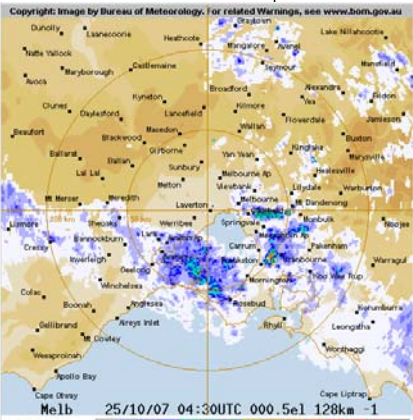
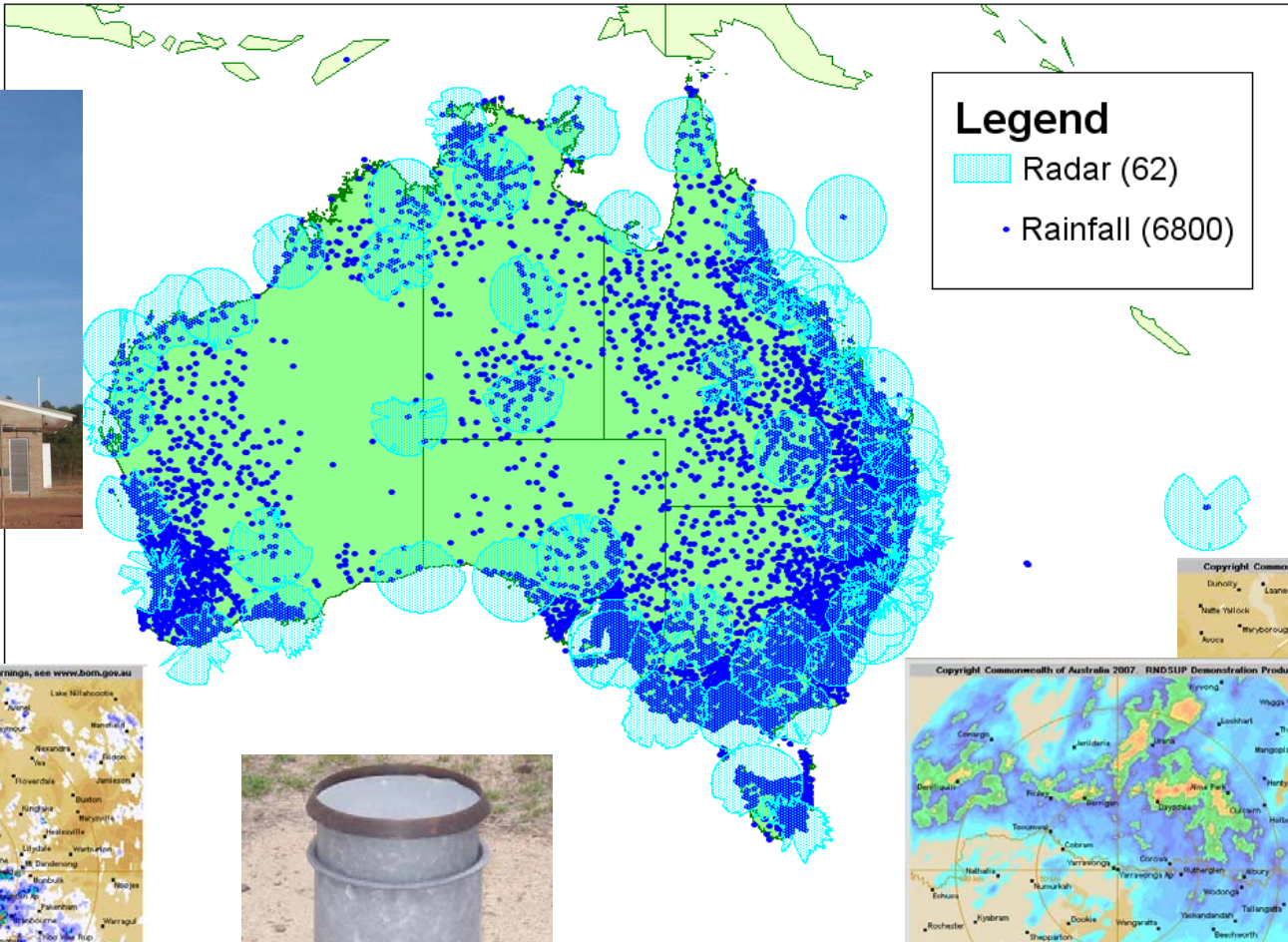
- **Sea Surface Temperature, NDVI, Grassland Curing, Solar Radiation**



Australian Government

Bureau

Radar & Rainfall



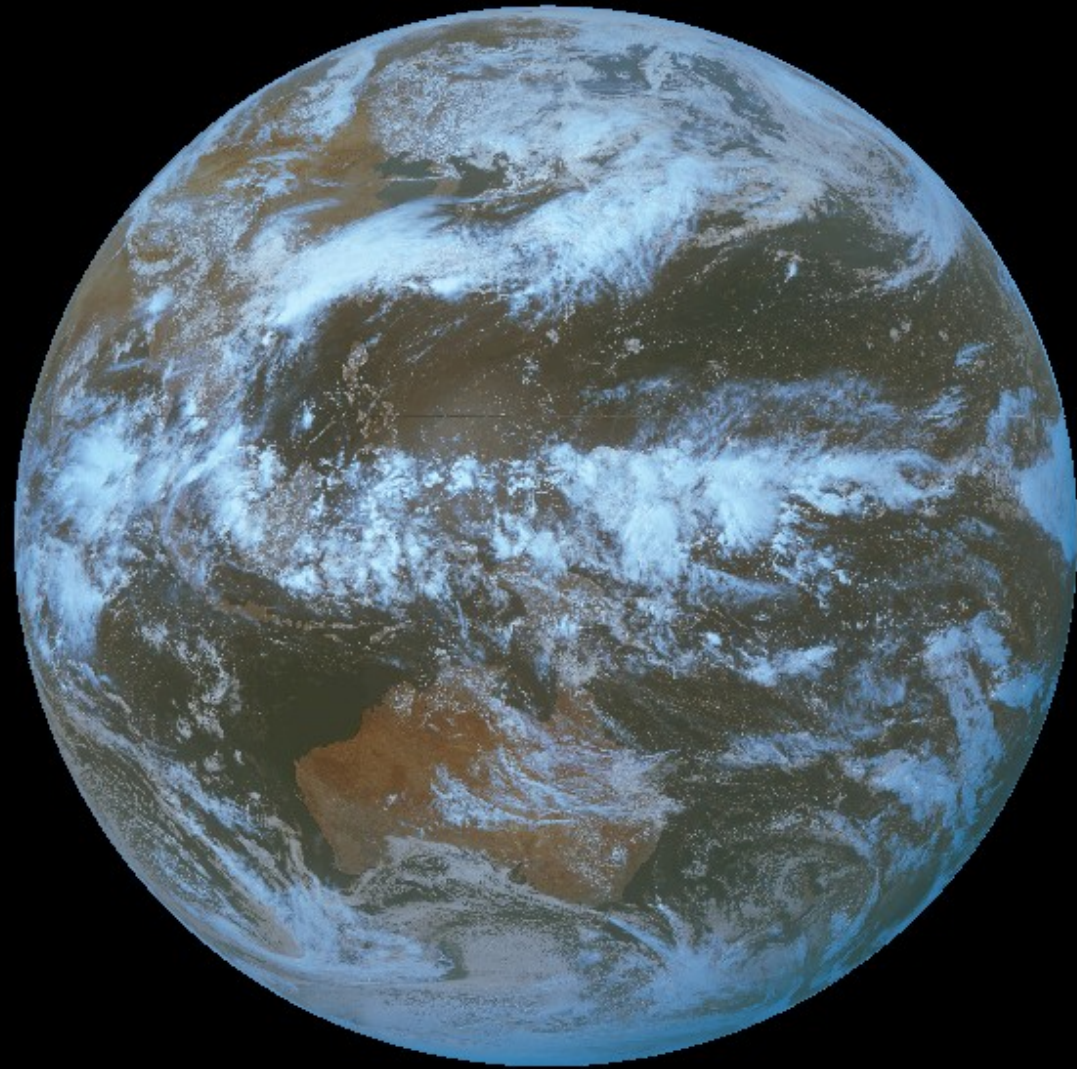


Australian Government
Bureau of Meteorology

MTSAT



- MTSAT-1R (140E)
- 0333 UTC, 9 May 2005
colour-enhanced
composite with Vis, IR
- Hourly data
- 1km VIS
- 4km IR
- 5 bands





Australian Government
Bureau of Meteorology

Questions



Thanks for your attention

Contact

Anthony Rea

a.rea@bom.gov.au

+613 9669 4222

