



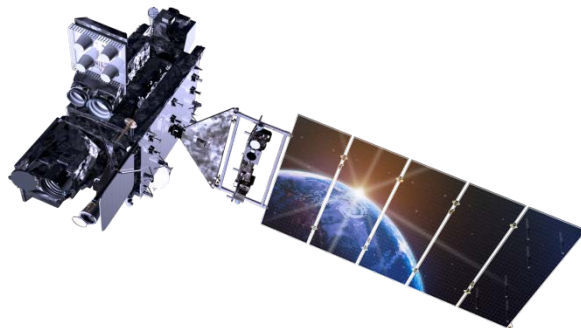
PERÚ

Ministerio
del Ambiente

Servicio Nacional de Meteorología
e Hidrología del Perú - SENAMHI

Technology Information and Telecommunication Office

Implementation plan to use satellite pictures from GOES-R



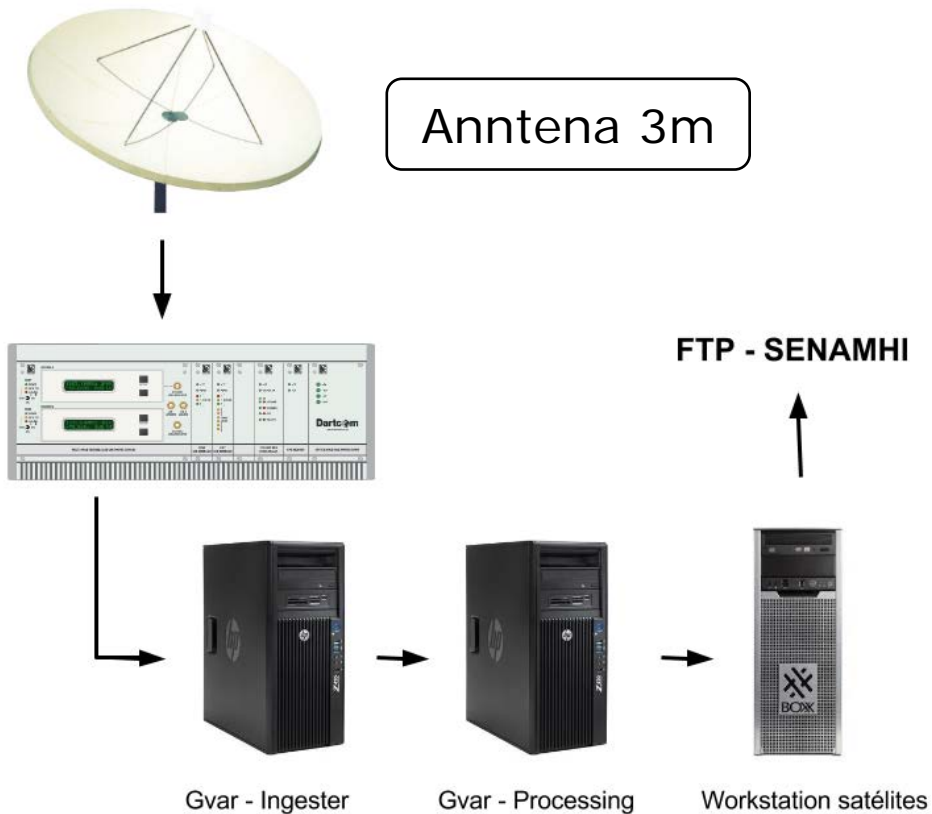
Ing. Jorge Chira La Rosa
jchira@senamhi.gob.pe

OUTLINE

- (i) Status of satellite data reception,
- (ii) Status of planning to receive new data (from GOES-R and other),
- (iii) Applications with satellite data involvement,
- (iv) Needs for capacity building and training.

Status of satellite data reception

GVAR DARTCOM



Status of planning to receive new data



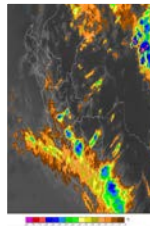
GeonetCast equipment

GRB Direct Service

Applications with satellite data involvement data



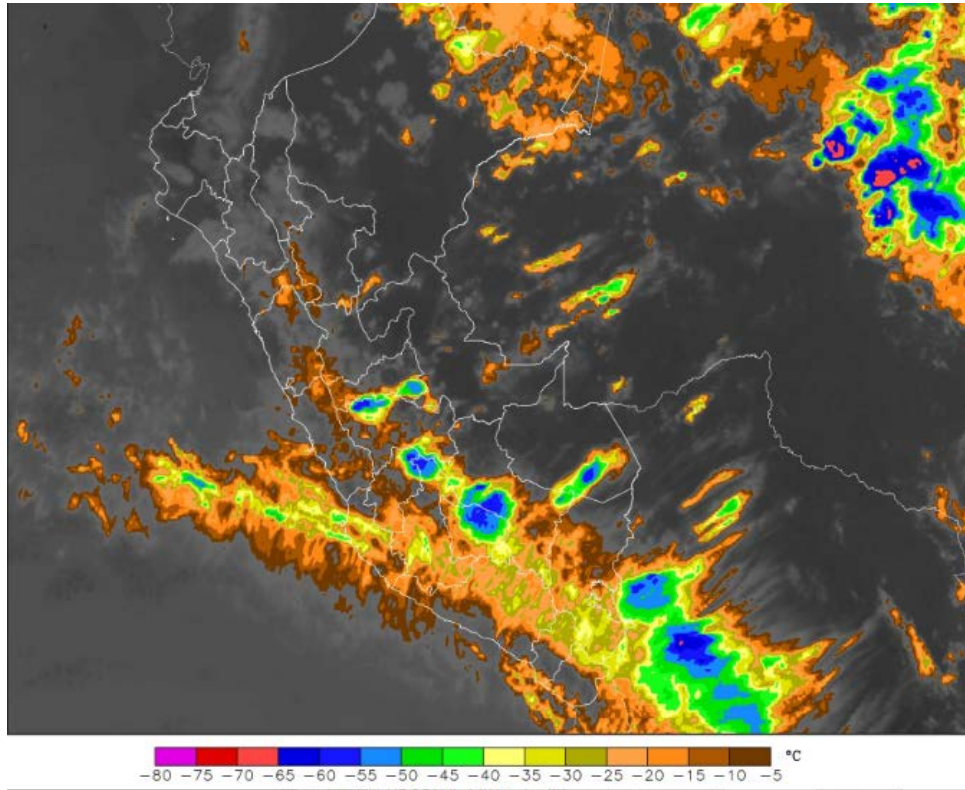
Hidrometeorological
Monitoring



Weather
Forecasting



DCS

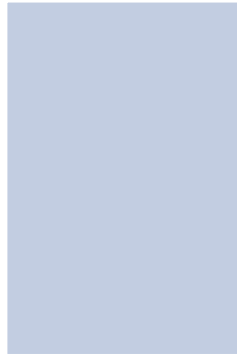


Needs and Ranking of GOES R Baseline Products

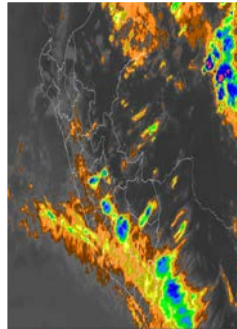
Sensor	Baseline Products	Ranking	Comments
Advanced Baseline Image	Aerosol Detection (Including Smoke and Dust)	3	To use Paracas wind
Advanced Baseline Image	Aerosol Optical Depth (AOD)	1	
Advanced Baseline Image	Clear Sky Masks	3	For evaluate freezing by satellite in Andean region
Advanced Baseline Image	Cloud and Moisture Imagery	4	
Advanced Baseline Image	Cloud Optical Depth	1	
Advanced Baseline Image	Cloud Particle Size Distribution	2	
Advanced Baseline Image	Cloud Top Height	3	
Advanced Baseline Image	Cloud Top Phase	2	
Advanced Baseline Image	Cloud Top Pressure	2	
Advanced Baseline Image	Cloud Top Temperature	4	For monitoring the highest's clouds/for evapotranspiration estimation
Advanced Baseline Image	Derived Motion Winds	4	Monitoring the moving of the clouds
Advanced Baseline Image	Derived Stability Indices	3	
Advanced Baseline Image	Downward Shortwave Radiation: Surface	3	Radiative Balance/for evapotranspiration estimation
Advanced Baseline Image	Fire/Hot Spot Characterization	2	
Advanced Baseline Image	Hurricane Intensity Estimation	1	
Advanced Baseline Image	Land Surface Temperature (Skin)	3	Monitoring low temperatures in Andes/for evapotranspiration estimation
Advanced Baseline Image	Legacy Vertical Moisture Profile	4	Better anliazes of atmosphere
Advanced Baseline Image	Legacy Vertical Temperature Profile	3	
Advanced Baseline Image	Rainfall Rate / QPE	4	Monitoring precipitation/hydrological cycle
Advanced Baseline Image	Reflected Shortwave Radiation: TOA	3	
Advanced Baseline Image	Sea Surface Temperature (Skin)	4	Monitoring El Niño
Advanced Baseline Image	Snow Cover	4	hydrological cycle
Advanced Baseline Image	Total Precipitable Water	4	Monitoring precipitation/hydrological cycle
Advanced Baseline Image	Volcanic Ash: Detection and Height	3	
Global Lightning Mapper	Lightning Detection: Events, Groups & Flashes	4	Monitoring storms

RANKING from 1 to 4 the ***GOES Level baseline products below where 1 = Not important -- may never use, 2 = Nice to have but not critical, 3 = Important, and 4 = Absolutely critical..***

Needs for capacity building and training



TI and human resources



GeonetCast Operating and Satellite Imagery Interpretation